



ISCC certification as a supporting tool for EUDR requirements

Dr. Katharina Heidrich

ISCC System GmbH
23rd October 2023



Introducing ISCC

ISCC is a leading certification scheme that is globally applicable for a wide range of feedstocks and markets





ISCC at a glance:

50000+

Total
Certificates
issued



130+

Total
Countries



9000+

Current
system users



1400+

Total ISCC
Auditors
trained



165+

ISCC training
courses
conducted



255+

Current ISCC
association
members



55+

Current
Cooperating
certification
bodies



Data as of October 2023

Feedstocks that can be covered by ISCC

Examples

Agricultural and forest feedstocks



FFBs



Canola



Sugar cane



Wood

Waste and residues



EFBs



UCO



POME



Straw

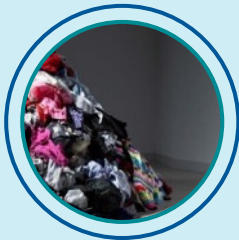
Circular feedstocks



Mixed Plastic Waste



End-of-life tires



Waste textiles



CO₂
(post-industrial)

Renewable energy-derived feedstocks



Hydrogen



Power-to-X

ISCC offers three main certification systems, application depending on the market

ISCC EU



Applicable for **sustainable fuels used for transport, electricity, heating and cooling in the EU**

To demonstrate compliance with the EU's sustainability criteria for biofuels, bioliquids and biomass fuels set out in the RED II

ISCC PLUS



Applicable for **voluntary** and certain **regulated markets**

Energy and biofuels outside the European Union (e.g. Japan, Australia)

Industrial applications

Food and feed markets

ISCC CORSIA



Applicable for **sustainable aviation fuels under ICAO CORSIA**

To **demonstrate compliance** with the sustainability and GHG criteria for CORSIA eligible fuels

The ISCC System is governed by the multi-stakeholder ISCC Association with 255+ members

New members are welcome



As of 21st September 2023

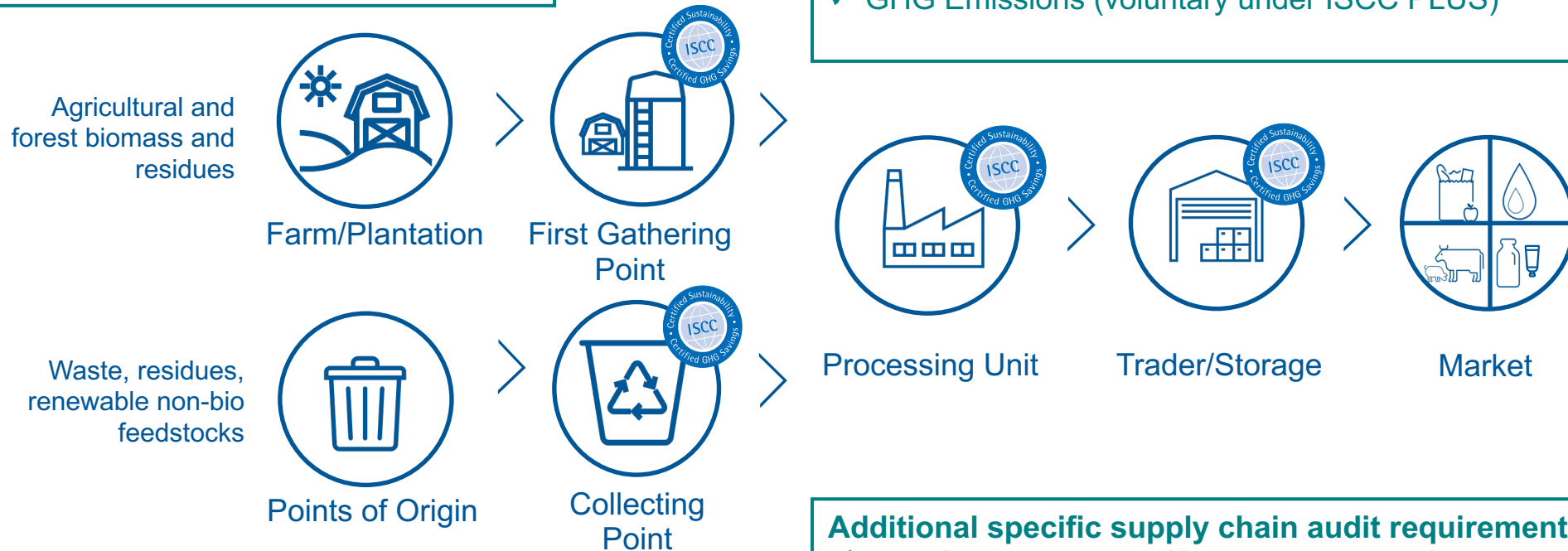
Overview of supply chain audit requirements

Farm/Plantation audit requirements

- ✓ ISCC Sustainability Principles 1 – 6

General supply chain audit requirements

- ✓ Management system
- ✓ Traceability documents and chain of custody
- ✓ GHG Emissions (voluntary under ISCC PLUS)



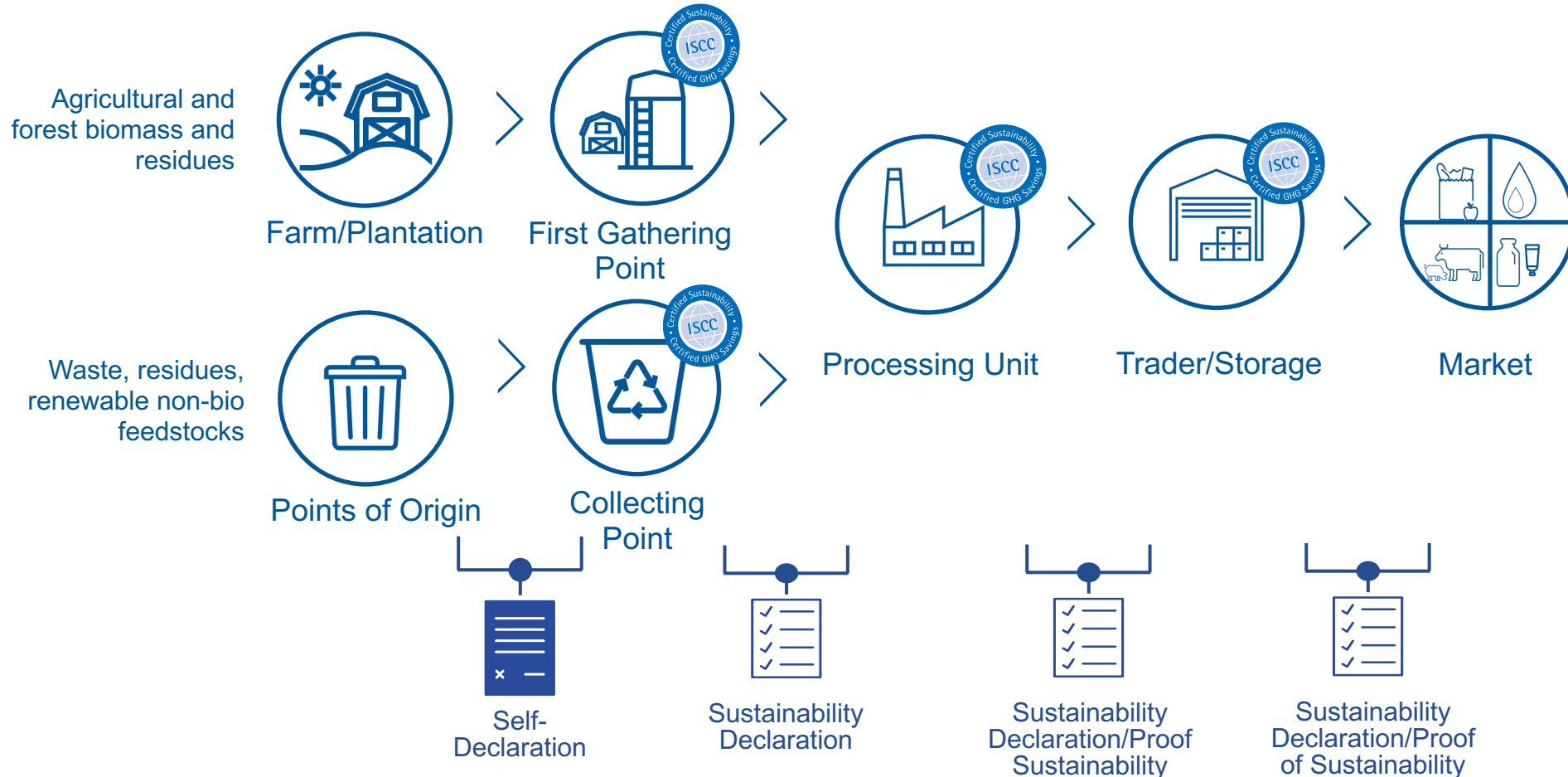
Point of origin audit requirements

- ✓ Verification if material meets the definition of waste or residues

Additional specific supply chain audit requirements

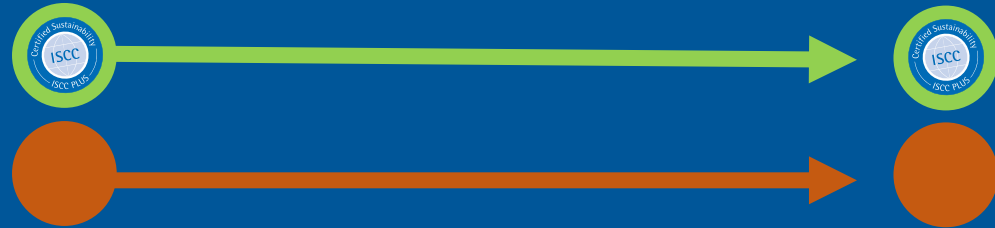
- ✓ First Gathering Points/Collecting Points: Group or individual certification of supply base (farms/plantations), plausibility of incoming materials (type and amount)
- ✓ Processing units: Conversion factor for company internal processes

Guaranteeing traceability along the supply chain



ISCC certifies different chain-of-custody approaches

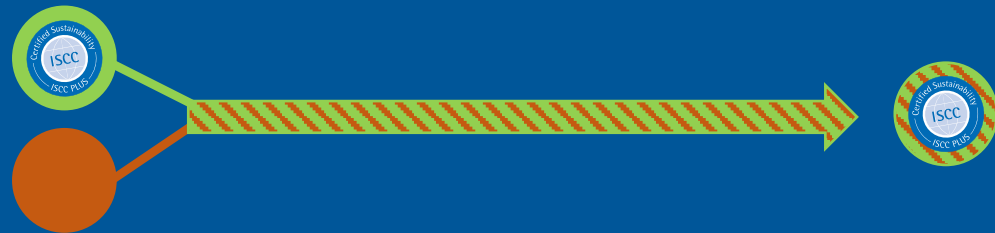
Physical Segregation



Controlled Blending



Mass Balance





ISCC Principles

ISCC Sustainability Principles



Principle 1

Protection of land with high biodiversity value or high carbon stock



Principle 2

Environmentally responsible production to protect soil, water and air



Principle 3

Safe workers conditions



Principle 4

Compliance with human and labour rights and responsible community relations



Principle 5

Compliance with land rights, laws and international treaties



Principle 6

Good management practices and continuous improvement

Principle 1: Biodiverse and carbon rich areas are protected under ISCC



Primary forests and other wooded land



Other forested areas*



Designated nature protection areas



Wetlands



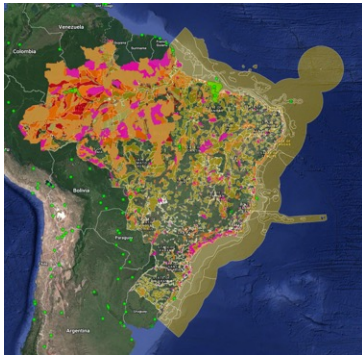
Peatlands



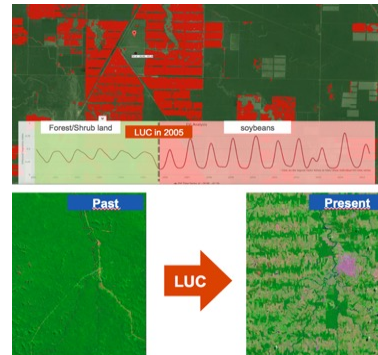
Highly biodiverse grasslands

ISCC uses GRAS for the risk assessment: Remote sensing tool to implement site- and region-specific sustainability risk analysis and land use verification

Biodiversity Areas



Deforestation



High Carbon Stock



Social Indices



Risk assessment and detailed analysis on
farm/plantation level

With GRAS sustainability can be checked from your
desktop



ISCC's support in achieving EUDR compliance



Key highlights of the EUDR

- **Obligations** applicable as of December 2024
- Commodities have to be produced **legally**, on land that was not subject to **deforestation** or **forest degradation** after December 2020
- **Operators** and **large traders** importing/exporting commodities on the EU market have to fulfil due diligence obligations
- **Due diligence process**: Information gathering, risk assessment and if applicable risk mitigation
- **Traceability** back to the plot of land
- **CoC** requirements: physical segregation
- No-Deforestation requirements relevant for all listed commodities & products
 - Forest degradation relevant for wood products only

Obligations of operators and traders

1 Gather Relevant Information

- Product information
- Geolocation data
- Deforestation-free status
- Production in accordance with relevant legislation

2 Risk Assessment

- Verification and analysis of the information
- Risk Assessment criteria include various social and environmental aspects

3 Risk Mitigation

- Collection of additional information
- Carrying out independent surveys and audits
- Adequate and proportionate policies, controls and procedures to mitigate and manage effectively the risks of non-compliance



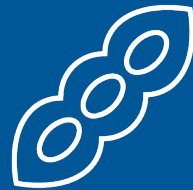
Due Diligence Statement

Commodities covered

The EU deforestation regulation includes **7 commodities and its relevant products¹**:



Oil Palm



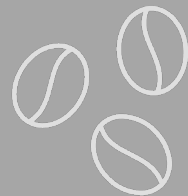
Soy



Rubber



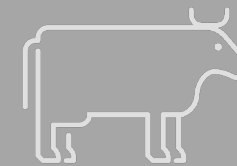
Wood



Coffee



Cacao

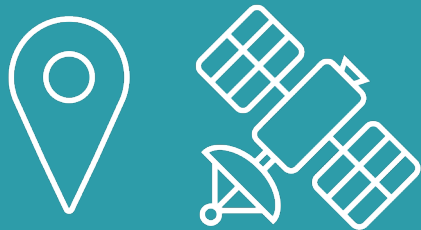


Cattle

ISCC provides support to comply with EUDR requirements

ISCC supports companies by developing an **EUDR Add-On** with the following components:

Information Collection & Deforestation Analysis



- Collection of product information and geolocation data
- Conduct deforestation analysis based on remote sensing data
- Assessment on legality

Risk Assessment & Risk Mitigation



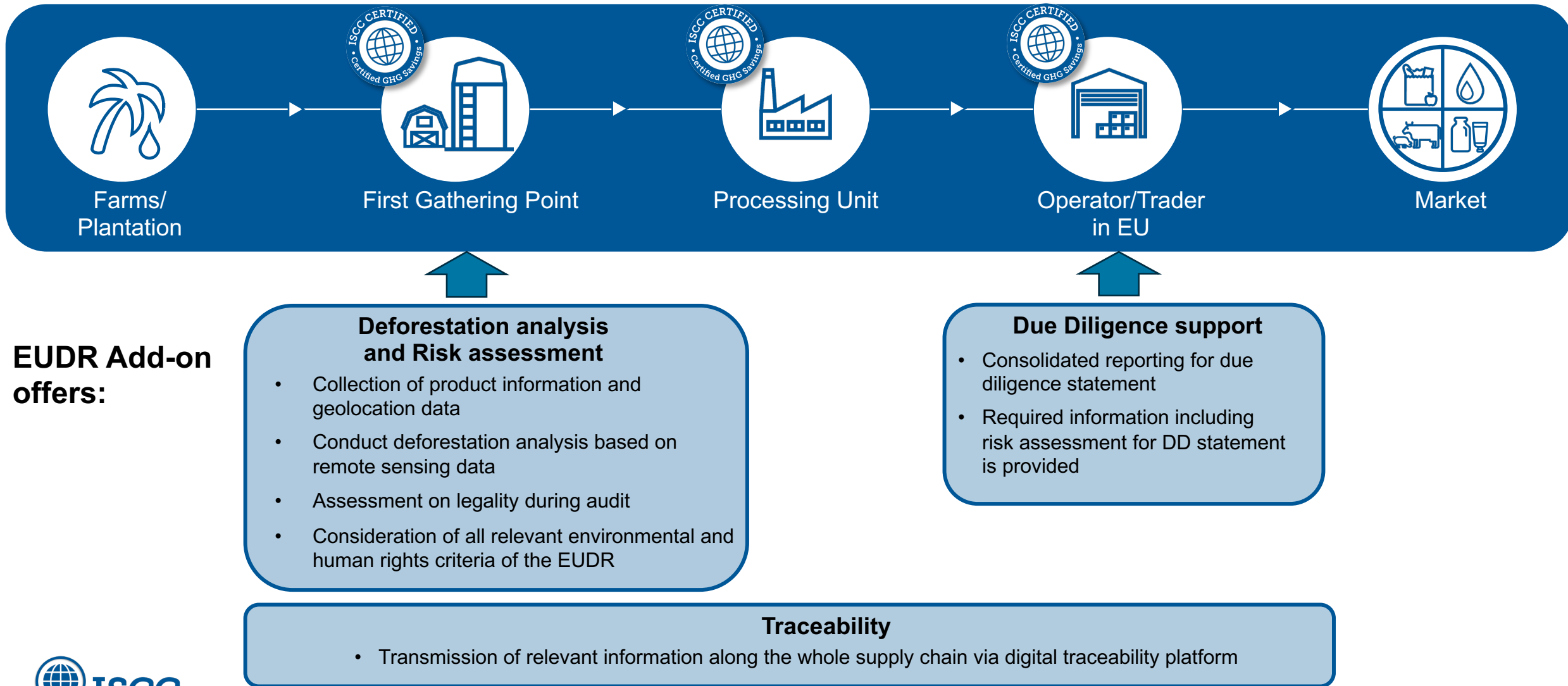
- Consideration of all relevant environmental and human rights criteria of the EUDR
- Identification of high risk hot spots
- Risk mitigation

Digital Traceability Platform



- Transmission of relevant information along the supply chain via digital traceability platforms
- Option to export for due diligence statement

Example of a simplified palm oil supply chain with certification Add-on



Supporting the implementation of EUDR

The ISCC EUDR Add-on supports system users with:

On-site audits

Support traceability and assurance of deforestation and legal requirements through:

- *Field visits*
- *Review of documents (e.g. proof of legality)*
- *Self-Declarations & Sustainability Declarations*
- *Specific audit requirements for physical segregation*
- *Interviews*
- *Audits are considered **risk mitigation** measures*

Tailor-made EUDR GRAS/ISCC tool

- *Collection of product/producer information and geolocation data*
- *Analysis of deforestation-free status using satellite imagery*
- **Risk assessment** in consideration of all relevant environmental and human rights criteria of the EUDR
- *Consolidated reporting for due diligence statement*
- **Digital Traceability Platform:** Transmission of relevant information along the whole supply chain via digital traceability platform

Advantages of EUDR Add-on

- *ISCC Certification already covers many of the EUDR requirements*
- *EUDR Add-on bridges the gap between the standard and the legislation*
- *Provides current users a practical solution*
- *Complementary format with ISCC audit*
- *Easy and cost-effective method to assess risk*



A one-stop-shop for your EUDR requirements



Thank you!

ISCC System GmbH

Hohenzollernring 72, 50672 Köln, Germany
Amtsgericht Köln HRB 68185

www.iscc-system.org



Feedback round

Slido.com
#ISCCeudr

