

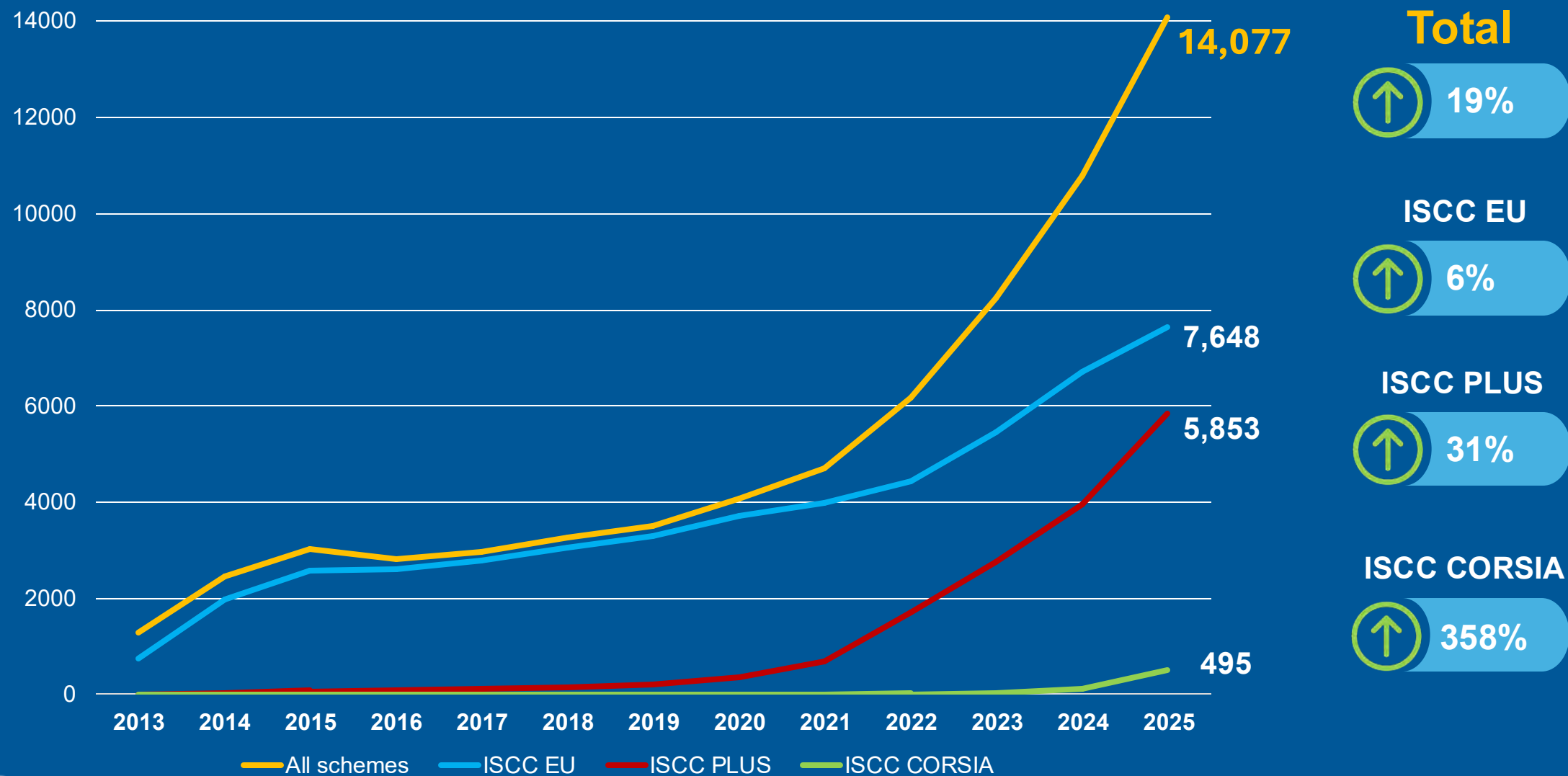


ISCC Regional Stakeholder Meeting Latin America

ISCC Updates and New Market Developments

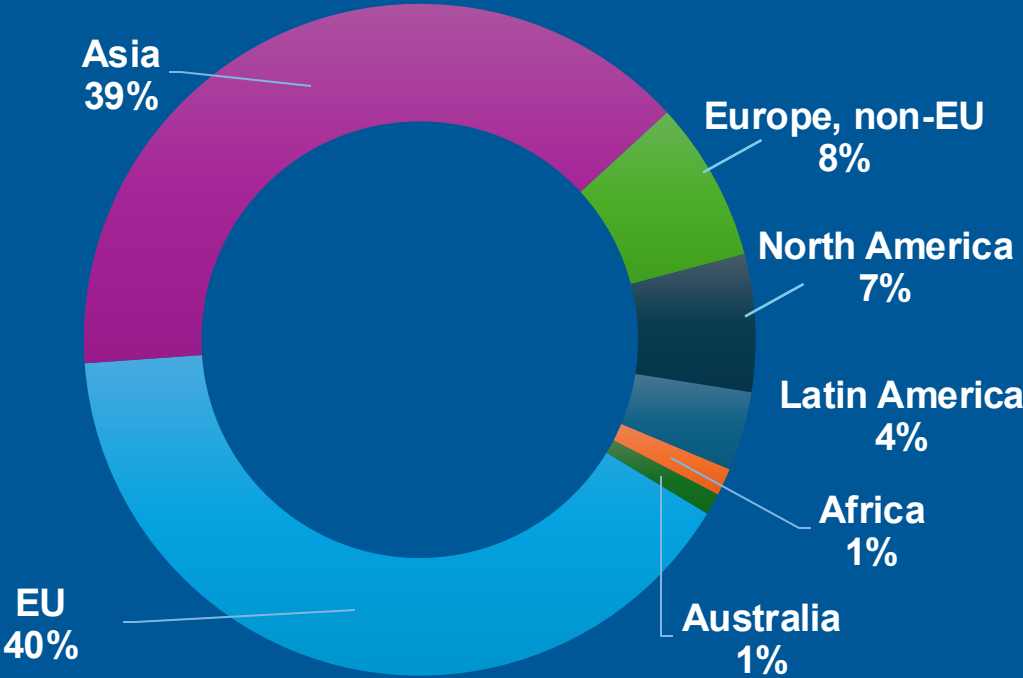
Dr Norbert Schmitz, ISCC System GmbH
ISCC Regional Stakeholder Meeting, Latin America
5 June 2025

Valid ISCC certificates increased 19% in the last year

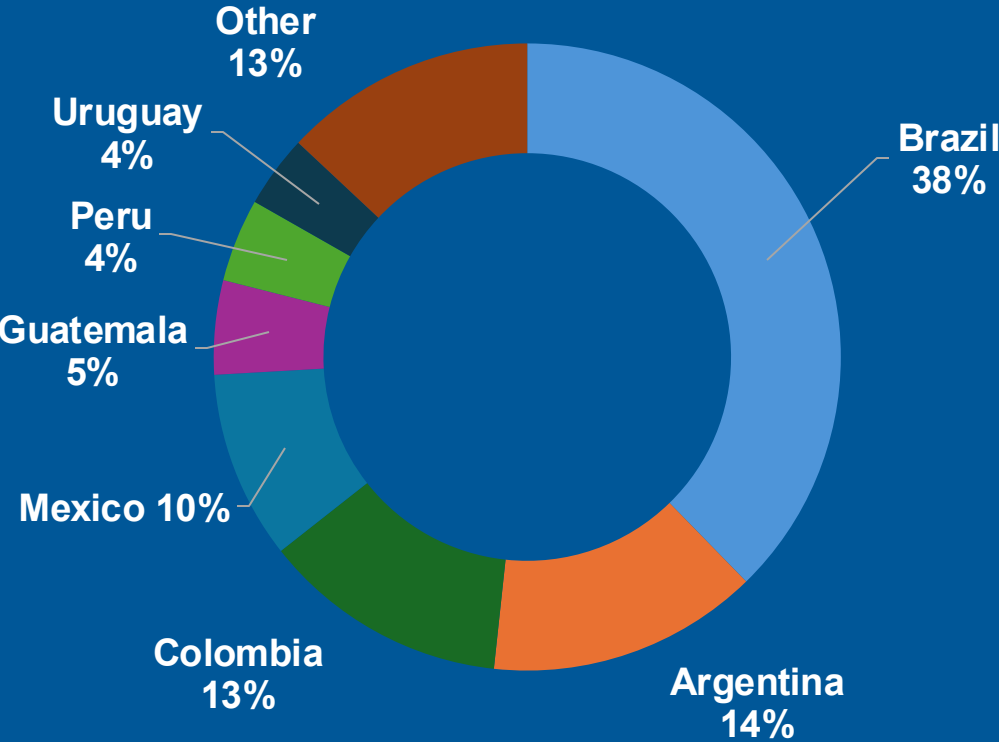


ISCC certification insights: Brazil, Argentina and Colombia leading the way in Latin American certificate numbers

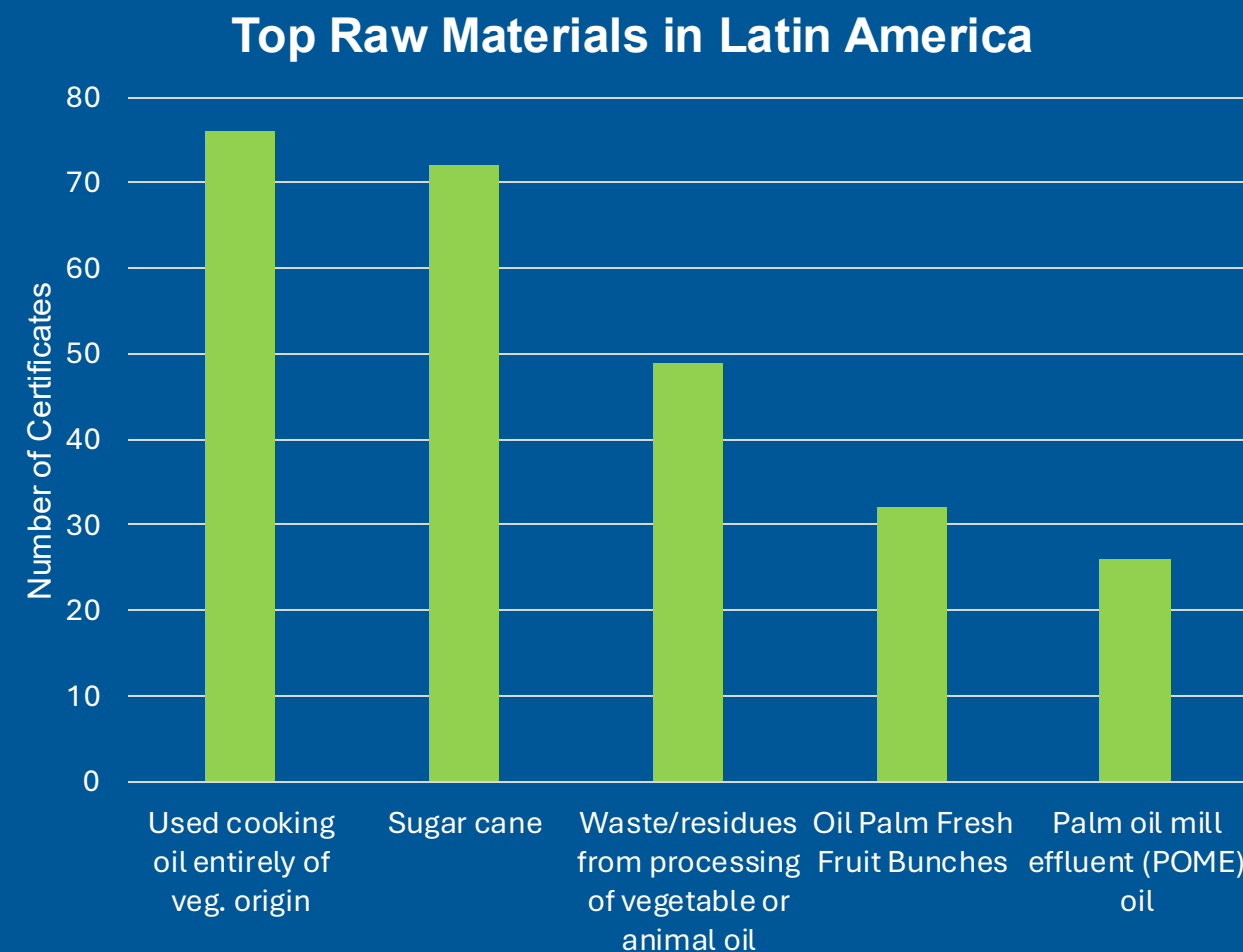
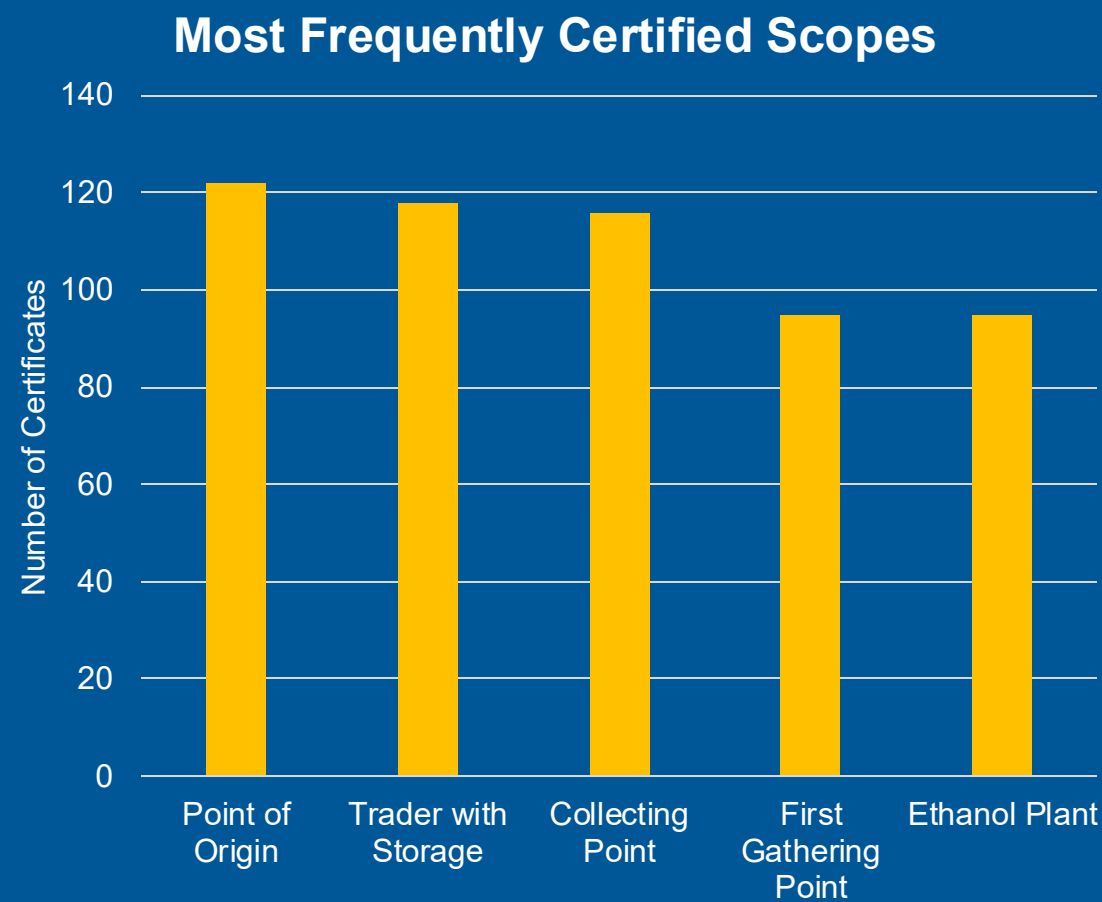
Valid certificates by region



Latin American certificates by country



Certification scope and feedstocks: UCO, sugar cane among most-certified raw materials in Latin America





The infographic features a central image of the Earth with the text '322 Members' overlaid. Surrounding the Earth are four teal arrows pointing clockwise, labeled 'Business and Industry', 'Research and Academia', 'NGOs and GOs', and 'Business and Industry'. To the right of the Earth, there are four horizontal blue bars, each containing an icon and a commitment statement. The background is a solid dark blue.

322 Members

**Business
and
Industry**



**Active multi-stakeholder dialogue
to cultivate innovative sustainability
solutions**



**Commitment to sustainable,
traceable, deforestation-free &
climate-friendly supply chains**



**Continuously improving standards
to meet global sustainability
requirements**

**NGOs
and
GOs**



**Further development of the circular
economy and the bioeconomy**

**Research
and
Academia**

11 of our 322 ISCC Association Members* are based in Latin America

New members
are welcome



Pantaleon

Styropek

Essential updates on ISCC EU: Key developments that matter to Latin America



- **Recognition process by EC for ISCC EU under the RED III finalized, applicable as of 21st of May for the following scopes:**
 - Biofuels, bioliquids, and biomass fuels,
 - Renewable fuels of non-biological origin (RFNBOs), and recycled carbon fuels (RCFs)
 - Co-processed fuels
 - Forest biomass
- **Updated ISCC EU Documentation, including:**
 - ISCC EU System Documents*
 - ISCC EU Audit Procedures
 - ISCC EU Certificate Template and Certificate Guidance
 - ISCC EU templates for Sustainability Declarations and Proofs of Sustainability
 - Integration of new requirements into APS

* Overview of adjustments and updated documents available at www.iscc-system.org/certification/iscc-documents/

Overview of Changes for ISCC EU System Documents

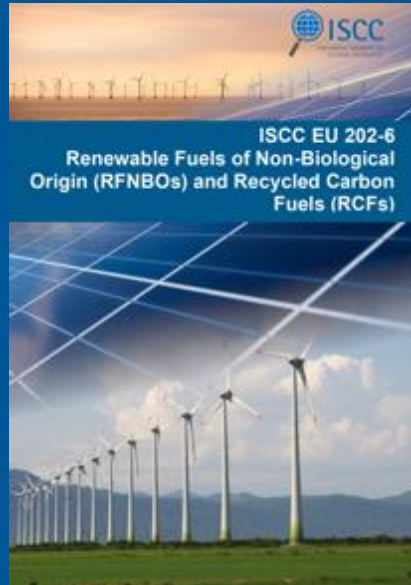
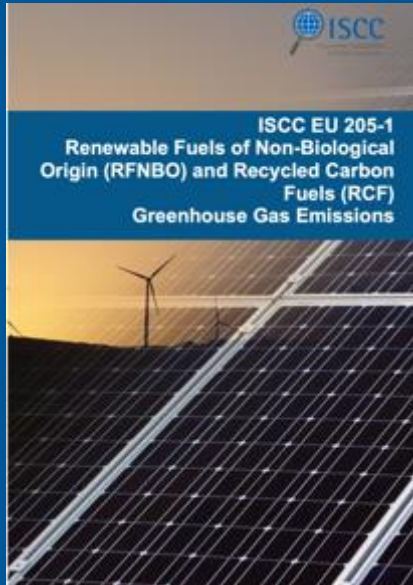
RED III Recognition

May 2025
v 1.0

Implications of the RED III changes

- On our website you may find an overview of changes for the ISCC EU System Documents. **Main changes include:**
 - Minimum level of GHG savings for electricity, heating and cooling
 - Amendment of the section on classifying materials as waste, residue, or (co-) product with more guidance and an extended flow chart for determination
 - Introduction of additional examples of non-conformities of CBs and System Users based on learning from CB audits and Integrity Assessments
 - Introduction of new land category “heathland” under agricultural biomass certification
 - No LUC conversion after Jan 2008 from high carbon stock land is now applicable to forest biomass as well

ISCC is fully ready to certify RFNBOs – EU COM officially recognised ISCC EU



Audit Procedure for Renewable Fuels of Non-Biological Origin (July 2024)				
No.	Chapter	Remarks	Risk level	Audit intensity
0.	Basic data	Basic data of the operational unit to be audited	not applicable	
1.	Management system	Risk assessment according to ISO 100 and 204	not applicable	
2.	Traceability	Within Chapter No. 2, 3 and 4 the risk of a flawed documentation has to be evaluated. The risk level determines the audit intensity	High	The documents of three successive months should be checked completely
3.	Mass balance		Medium	The documents of one month should be checked completely and random samples should be taken from three successive months
4.	Greenhouse Gas emissions	Calculation of actual values	not applicable	
5.	Sourcing renewable electricity	Check of requirements for sourcing stored electricity as fully renewable	not applicable	
6.	List of Best Practices, non-conformities and Measures	Defined list of all points marked "no" in the column "Conformity"	not applicable	

■ Recognition:

- Official recognition in place as of the 19th December 2024
- Already pre-recognized by Danish and German authorities

■ Certificates and pilot audits:

- Eight certificates have been already issued and many others in the pipeline
- More than 20 pilot audits have been conducted

■ Stakeholder engagement and training:

- 150+ auditors trained in three ISCC RFNBOs Training
- +800 participants in RFNBOs events and TCs RFNBOs

ISCC EUDR Add-on offers a comprehensive solution for all EUDR requirements – compatible with ISCC EU and ISCC PLUS



Deforestation analysis

Satellite data-based analysis by ISCC EUDRx tool



Legality check

Automated risk assessment and on-site audits



Report

Creation of a results report for DDS and access to geodata



Wood



Palm



Rubber



Soy



Traceability

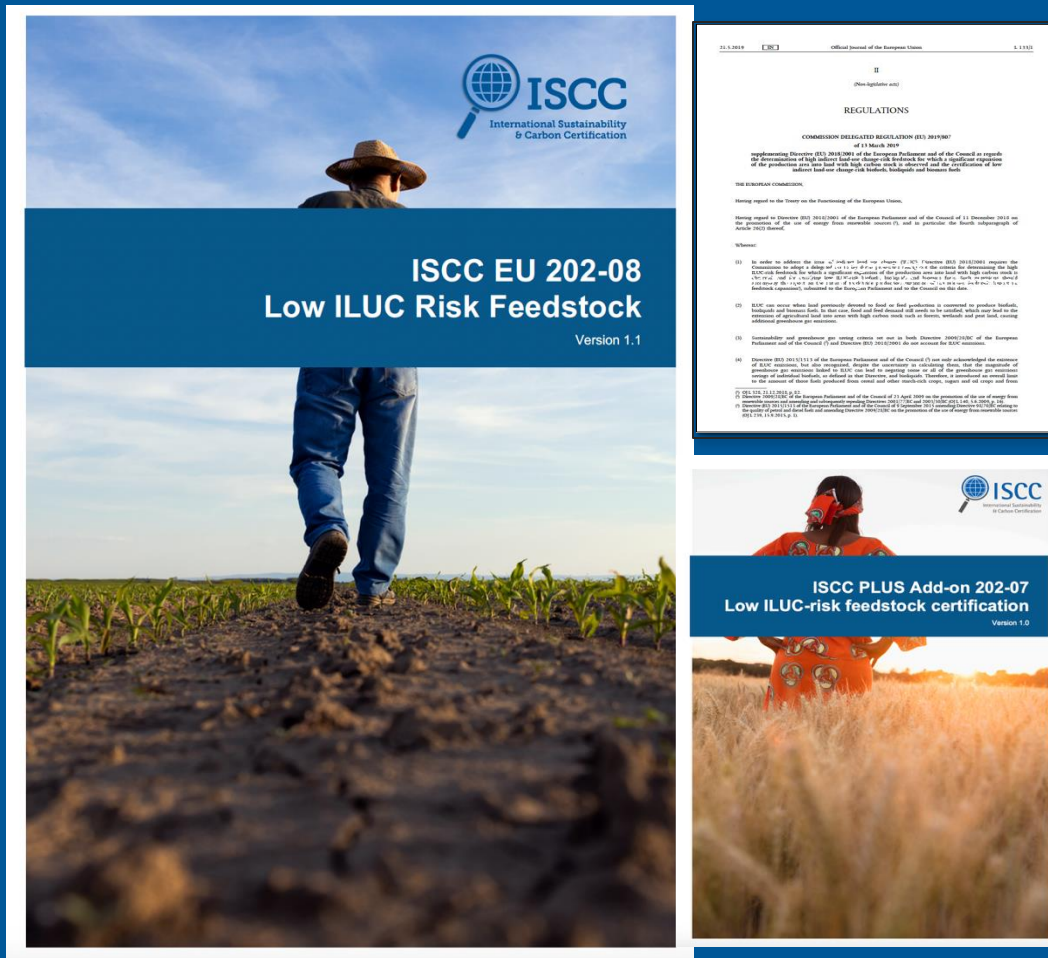
Passing on relevant information along the supply chain



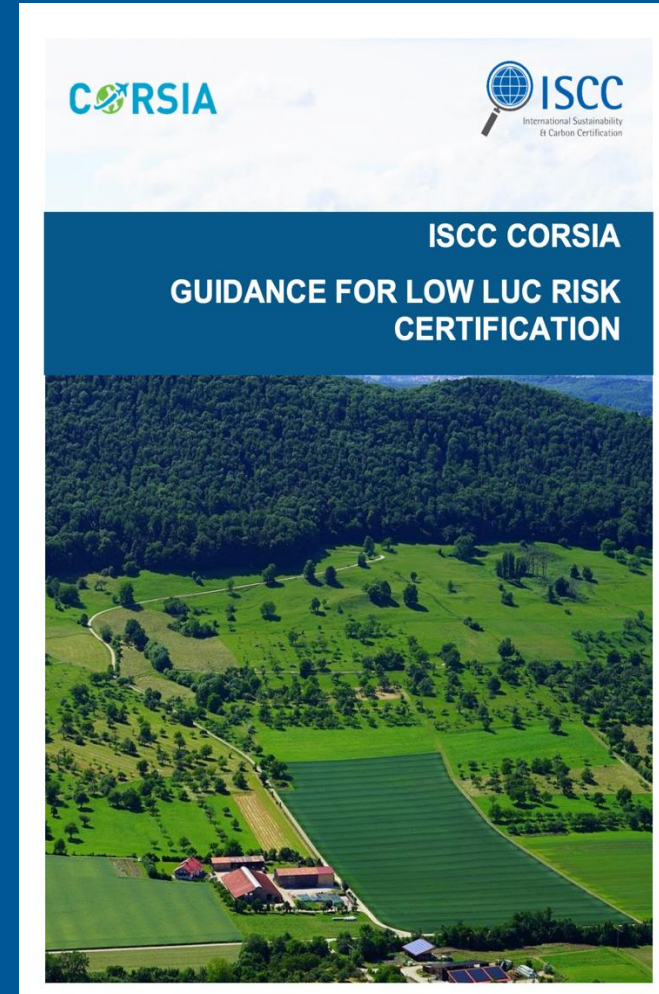
Risk Assessment & Mitigation

Assessing all relevant environmental and human rights criteria

Low ILUC approaches under ISCC schemes



Low ILUC risk feedstock certification for ISCC EU and PLUS schemes under the RED framework



Low LUC certification for SAF under CORSIA





ISCC Regenerative Agriculture Add-On

Supports regenerative practices on **farm level** with the following **benefits**:

- Soil health
- Water health
- Biodiversity
- Carbon sequestration

Multi-stakeholder pilot projects In collaboration with:

- Neste with Texas A&M University and North Dakota State University → Field trials in US
- Bunge → Field trials with farmers in Romania, Hungary and Poland

ISCC RegAg Add-On will be launched Q3/4 2025

Interested? Get in touch!

Certification approach for forest biomass and key developments

ISCC EU – Regulatory market

ISCC Forest Biomass Principle 1
under RED III
Principles 2-6: Additional social &
environmental criteria



Biomass fuel/ biofuel/
bioliquid producers



Energy producers/
installation

Key developments



First ISCC PLUS
certificate issued for
forest biomass



ISCC EU certification
process approved



System documents
and relevant audit
documentation
available now on
ISCC website

ISCC PLUS – Voluntary market

ISCC Forest Biomass Principles &
FSC Forest Management certified
forest biomass



Chemical industry



Construction sector



Furniture industry

ISCC PLUS Updates relevant for LATAM



Follow potential opportunities for **recognition** e.g. Environment and Climate Change Canada (ECCC) for the Clean Fuel Regulation (CFR)



Follow up with legislative development e.g. EU Green Claims Directive, Single-Use Plastic Directive



Development of new **material** list structure & process & markets

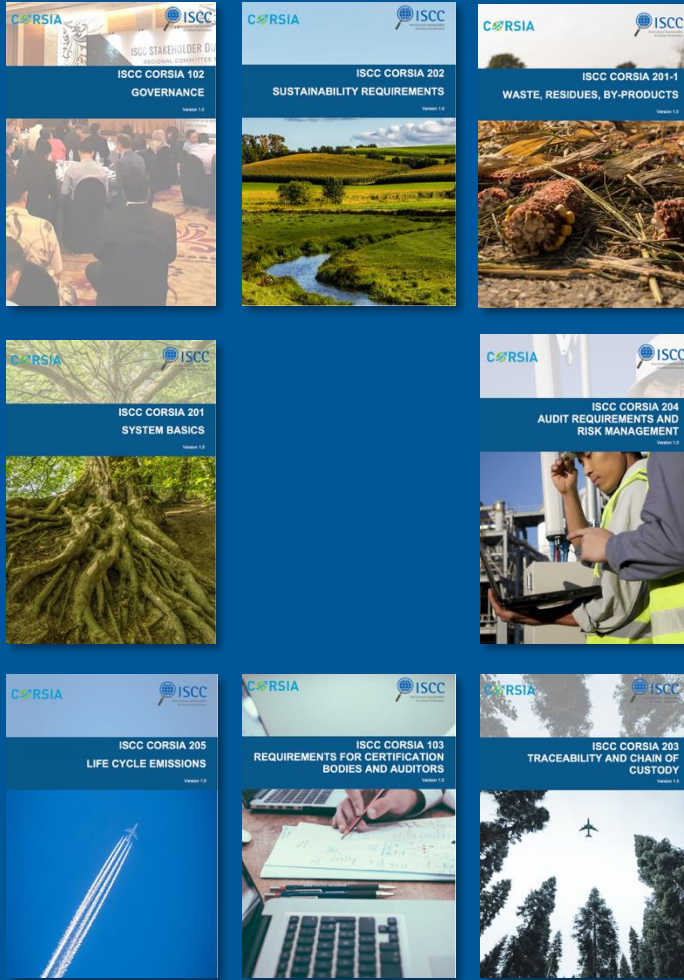


Continuous development of **Carbon Footprint Certification** and the **Regenerative Agriculture Add-On**



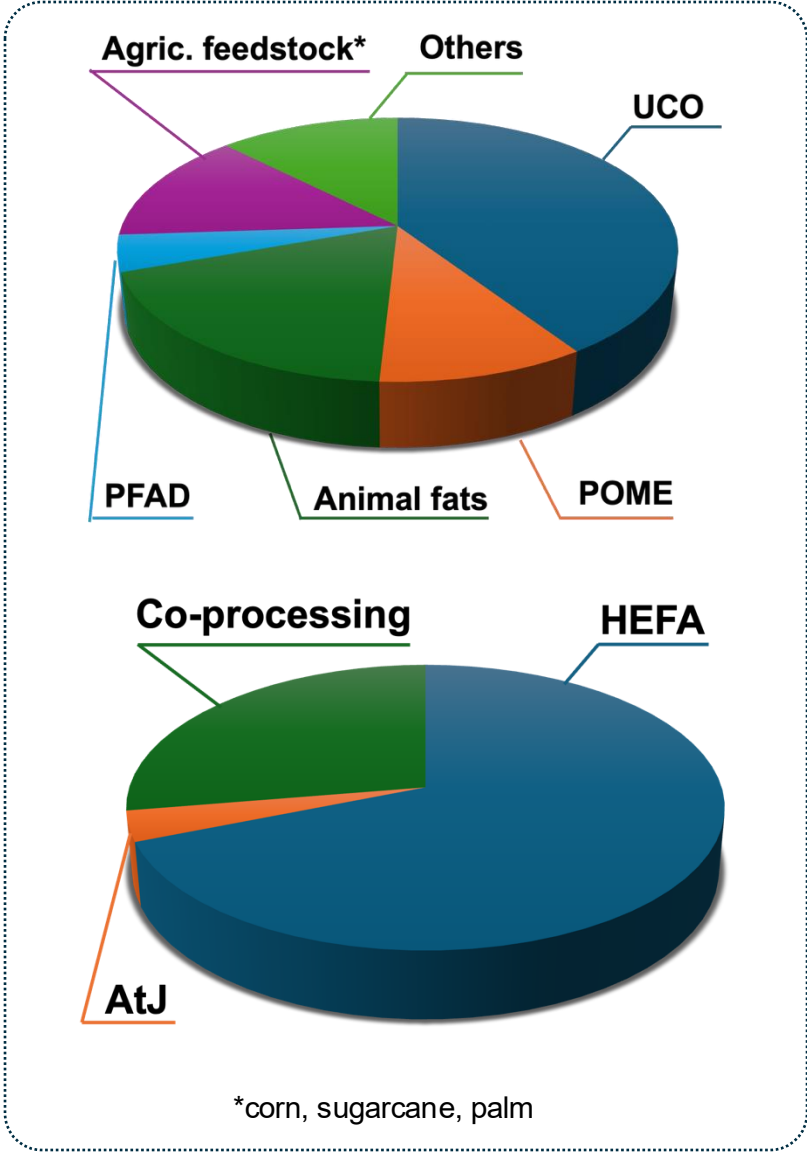
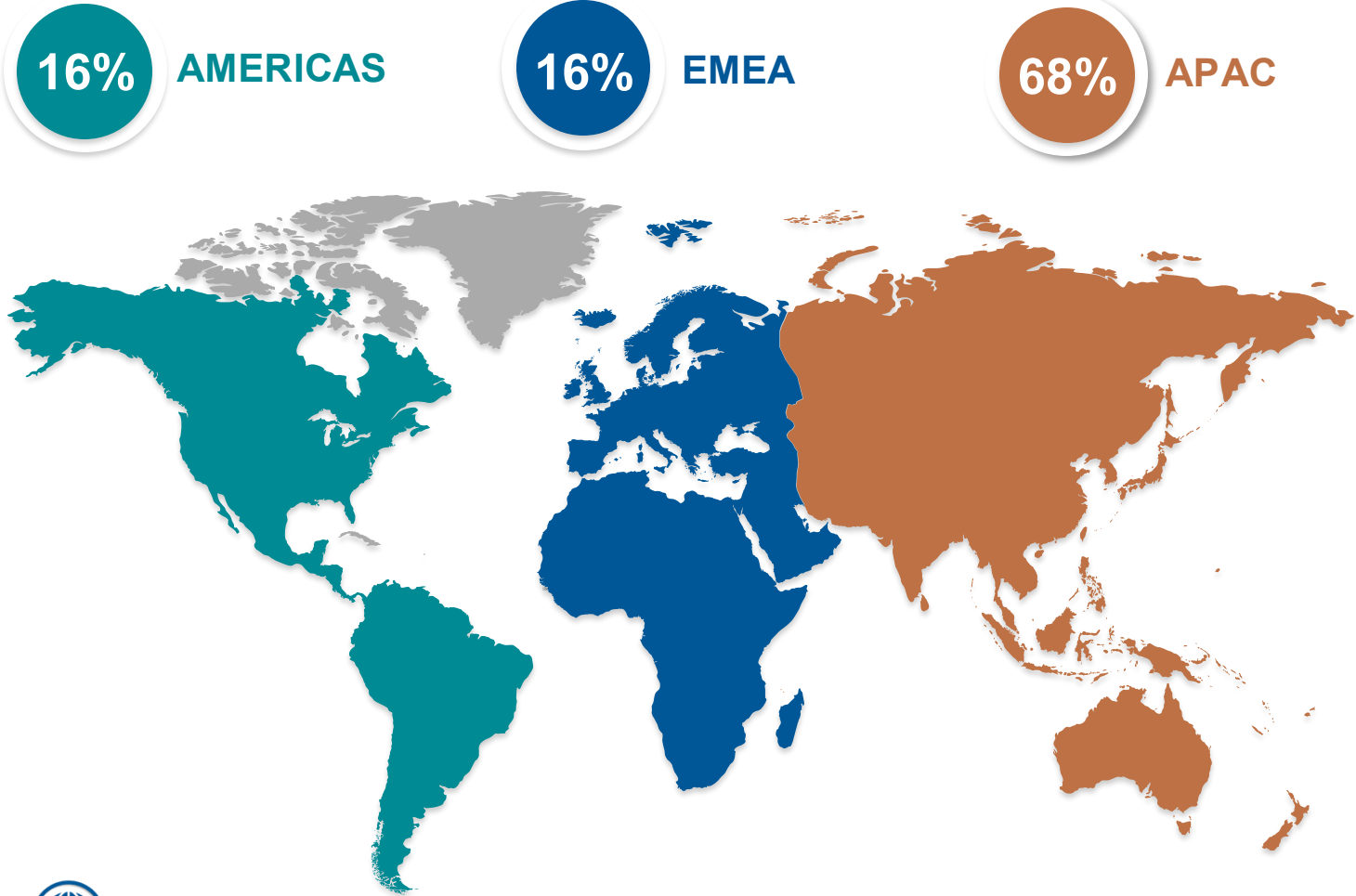
Continue global **multi-stakeholder** process and working groups

ISCC spotlight on LATAM – Developments and challenges in SAF certification



- In the last year, **19 operators in LATAM** (all in Brazil) **achieved ISCC CORSIA certification**
- Overall, 6 **ISCC CORSIA low land use risk certification** were successfully issued, for the feedstocks palm, corn and sugarcane
- **ICAO is advancing methodologies for soil carbon accumulation and CCS relevant to LATAM operators.** ISCC is prepared to include these in CORSIA certification when available
- A wide range of regional **LATAM SAF feedstocks** are applicable for certification under CORSIA or EU RED (Intermediate feedstocks on degraded lands) opening **new opportunities** for both the **domestic market** and **export potential**

2024 as a momentum year : a steep climb for the ISCC CORSIA certificates (+400% !)



Ensuring Trust in SAF Claims: ISCC'S Globally-Leading SAF Registry

- The ISCC Credit Transfer System Registry **connects certified physical SAF supply chains** with the **SAF claims** by airlines and end-customers (i.e., Scope 1 and 3 claims)
- Functions as an **extension of the current supply-chain certification** systems
- The System provides both **transparency and credibility for SAF claims**:
 - defining **clear rules** around SAF sustainability, credit transfers and SAF claims
 - the use of a **secure digital registry** for all SAF credit transfers and resulting claims

Numerous Global Partners:





Marine Fuels: A Market Opportunity for feedstock and fuels producers in LATAM

- Increased interest in the certification of SMF. Certification is mainly driven by **regulatory developments on EU and international levels**
- ISCC is actively **involved in working groups** on marine fuel certification at EU and IMO levels
- Unlike the EU, the IMO will likely consider crop feedstocks for marine fuel, offering LATAM suppliers new business under future policies
- ISCC has been proactively **engaging major players in the marine space** over the past half year. Many **largest shipping companies** are ISCC members by now
- Feedback from major shipping companies is that **currently available biomarine fuel is almost entirely ISCC certified**

Fraudulent behaviour in high risk supply chains – reflecting on current situation

- End of March 2025, a LinkedIn post was published - which has been removed by LinkedIn in the meantime - with “information” about a confidential meeting of the EU Committee on the Sustainability of Biofuels, Bioliquids and Biomass Fuels, established under Renewable Energy Directive, by a person who did not participate in the meeting
- Contrary to claims made via this post, no vote took place and no decisions were made during the EU Committee’s meeting. However, this post has caused considerable unrest in the market and led to irritation, which is probably what the author wanted to achieve
- ISCC has constructive dialogue with the EU COM and some EU MS and authorities as well as relevant stakeholders (e.g. industry associations). This week (2nd June) ISCC held a Regional Stakeholder Committee Europe in Brussels during which next steps for further improvement of the standard were brought forward, with an enthusiastic response from the Committee.
- ISCC is a certification system, not a law enforcement agency. Difficult overall situation for VS, e.g. challenges with oversight of CBs by EU MS, interpretation of mass balance requirements, unclear definitions and codes Annex IX (A), National Schemes,....
- ISCC would be happy to establish an improved collaboration with the relevant EU, MS authorities and law enforcement agencies to ensure that fraudulent behaviour is punished and gains consequences for companies involved. Together with our ISCC members, ISCC would like to develop the needed measures and steps to improve the credibility of certification under the RED and to strengthen the future verification framework

ISCC's commitment to strengthening certification with a focus on auditing and preventing feedstock fraud

- Auditor Trainings
- Certification Body Meetings
- Auditor Guidance
 - Working Group on on w/r definition and specifications
 - Reviewing and assessing suitability of laboratory analysis



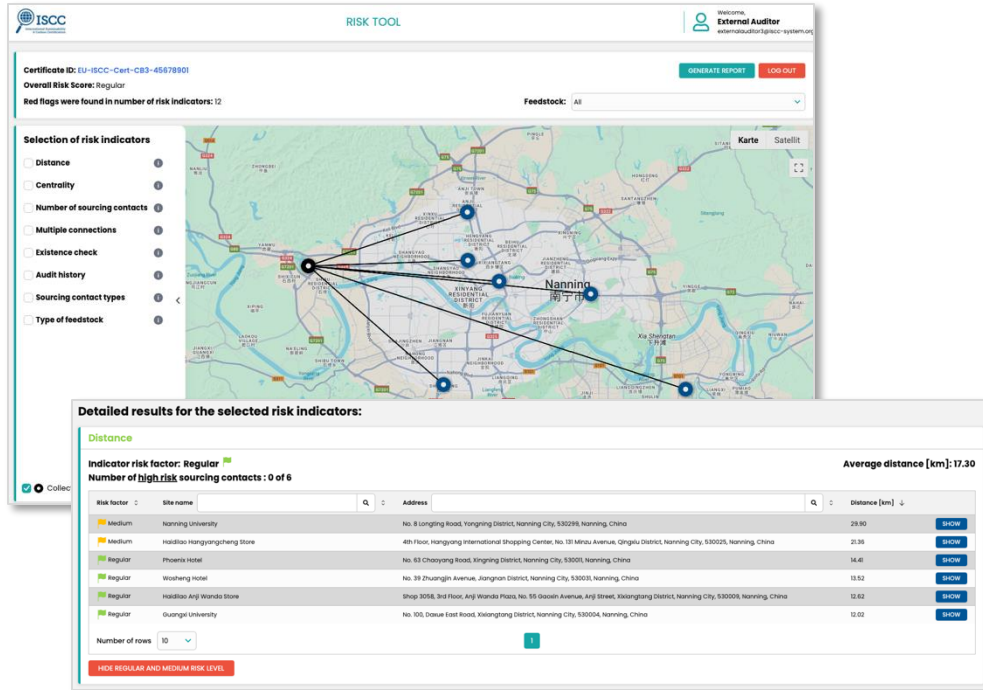
Online company data and credibility checks

- Orbis database (Moody Analytics)
- ISCC Whistleblower Tool
- ISCC Integrity Programme
 - 74 on-site Integrity Assessments globally
- Integrated IT infrastructure and end-to-end solutions

Communication – Training - System requirements and procedures - Monitoring

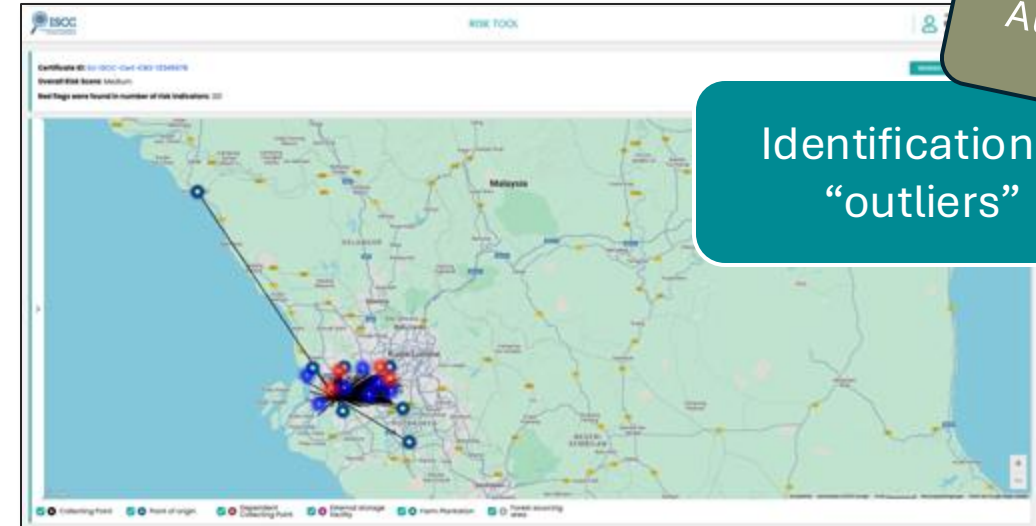
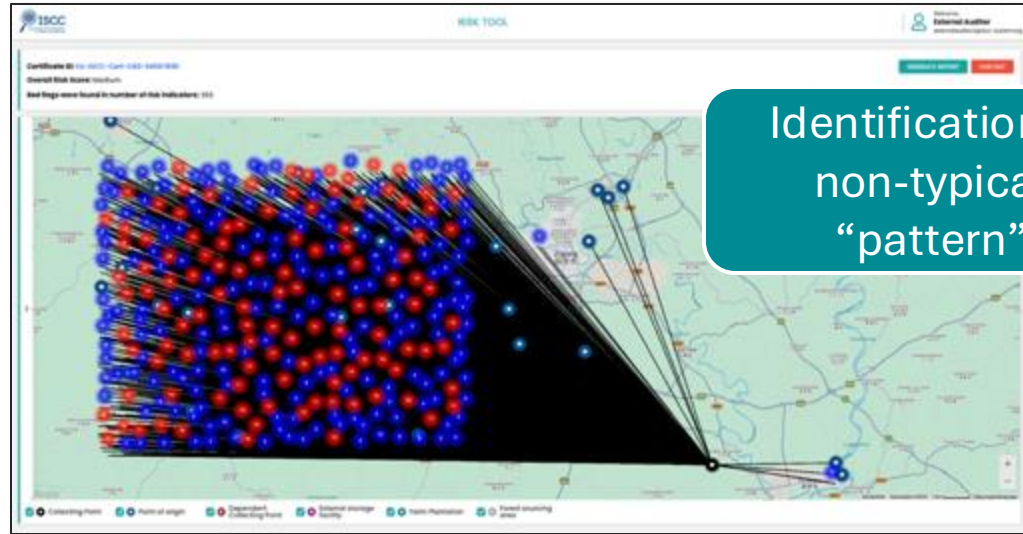
The Risk Tool supports ISCC auditors conducting the risk assessment and planning the on-site audit

Audit process

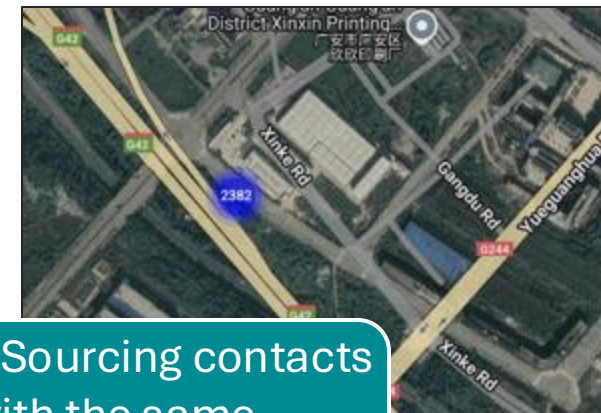
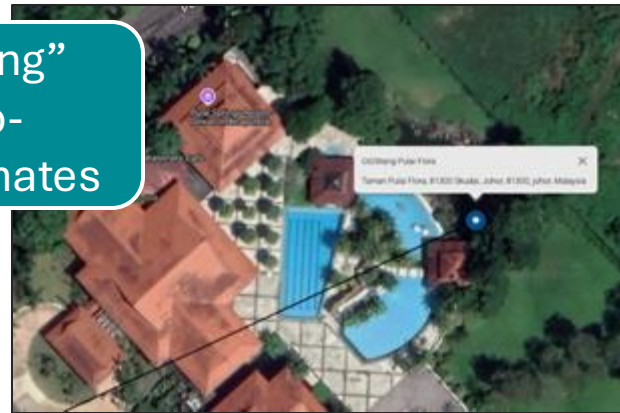
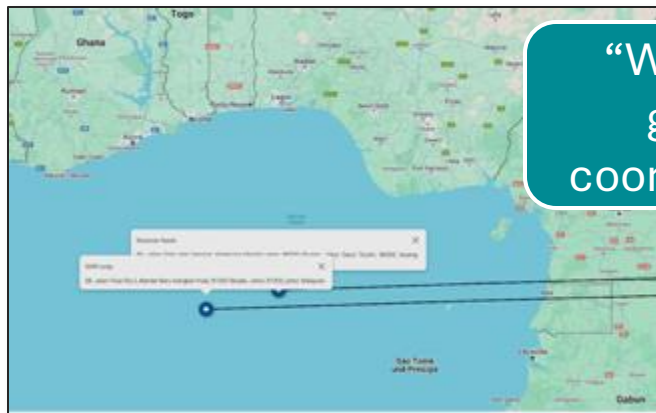


- The ISCC Risk Tool supports the auditing process
- Mapping of sourcing contacts (Points of Origin)
- Risk indicators to identify “high risk” sourcing contacts, e.g.:
 - Long distance CP – PoO
 - Misleading geocoordinates/ addresses
 - Unusual sourcing pattern
 - Plausibility check with Google API
- Focus: high-risk feedstocks like UCO, POME, brown grease, etc

The RMT improves inter alia the auditor's risk management and audit planning, e.g. by highlighting questionable patterns, implausibility's



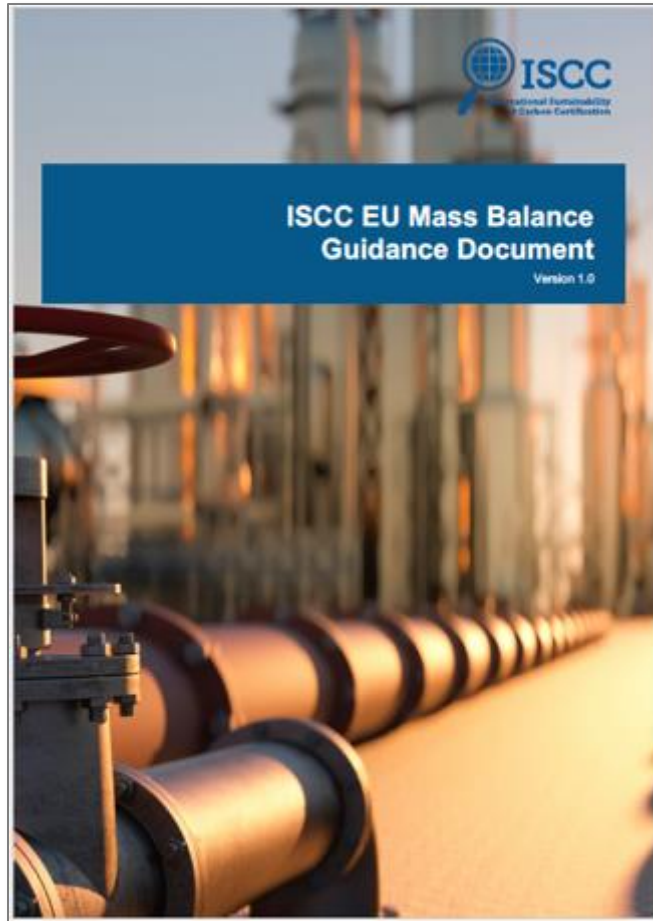
Audit process



2,300+ Sourcing contacts with the same geo-coordinates

The guidance document on mass balance provides clearer rules and will reduce misinterpretations of criteria and errors

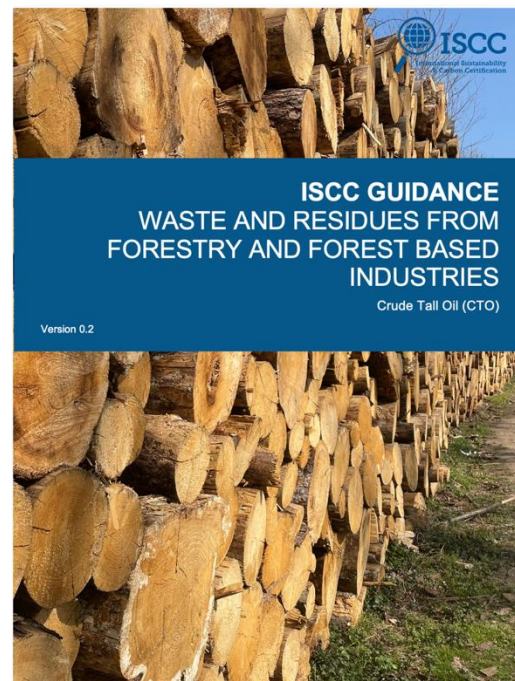
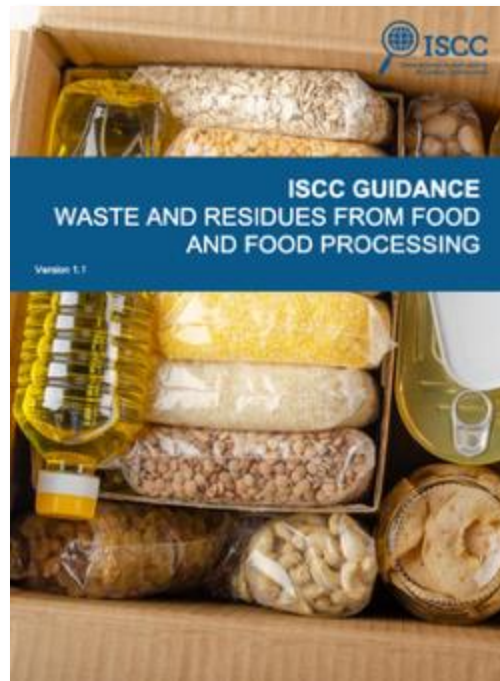
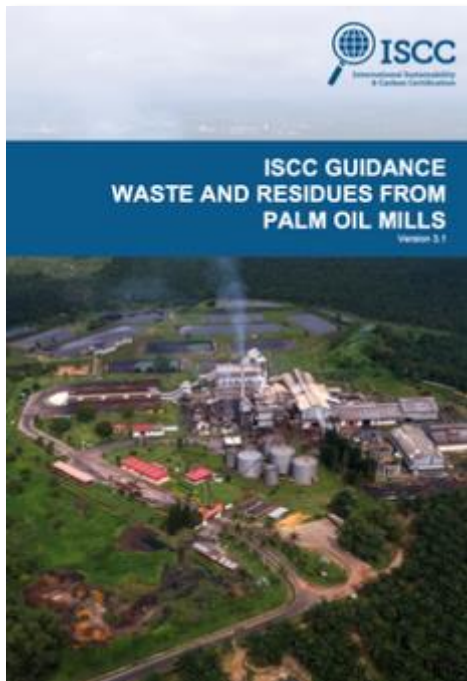
Audit process



- ISCC EU guidance document on mass balance ensures that ISCC stakeholders have an aligned understanding of the rules and limitations of mass balance. The document provides expanded guidance to complement and reinforce the ISCC EU 203 document
 - The ISCC working group on Mass Balance published (April 2025) a document to clarify on most relevant topics and provides visualization for mass balance guidelines, e.g.:
 - Classification of physical identity and product group linked to ISCC material list
 - Tolerance zone of 2-5% regarding product group criteria
 - Decision trees for assignment rules along the supply chain
 - Explanation of specific scenarios: e.g. co-processing, pipelines, biomethane/biogas set-ups
- ✓ One level playing field for ISCC system users
- ✓ Clear guidelines for auditing

ISCC is continuously expanding and updating its guidance on the auditing of waste and residue feedstocks with stakeholders

Audit process



- Now public:
 - Palm Oil Mill Wastes
 - Used Cooking Oil
 - Brown Grease
 - Food Waste
 - Sewage Sludge
 - Soapstock
- Coming soon:
 - Spent Bleaching Earth
 - CTO

ISCC Whistleblower tool serves as an important tool to support the detection of non-conformities

CB monitoring

The image shows a screenshot of the ISCC Whistleblower Tool website. The website has a header with the ISCC logo and navigation links: Search, Help, Certificates Database, ISCC System Documents, Information, Career, Login. Below the header, there's a section titled 'Whistleblower Tool' with a description of the tool's purpose and how to use it. The 'How to use the ISCC Whistleblower Tool?' section explains that anyone can submit reports, including the general public, ISCC system users, licensees, members, certification bodies, other stakeholders, and ISCC employees. It also mentions that reports should be submitted via the dedicated Whistleblower Tool. The 'Multiple Submission Options' section states that users have flexibility to submit reports in various ways, including PDF, PNG, docx, SVG, mp4, temp, Ovi, and more. The 'Anonymous Reporting' section explains that users can choose to submit reports anonymously by refraining from providing any personal identifying information. Below the text, there's a 'Step-by-step process' section with a numbered list starting with '1 Welcome Page: Start by visiting the ISCC Whistleblower Tool's welcome page, where you will find legal information on the usage of the tool.' To the right of the text, there's a sidebar with a 'GUVERNANCE' section containing links to Multi-Stakeholder Initiative, ISCC Association, Partnerships, Public Consultation, and Quality & Integrity Management. Below the sidebar, there's a sample report form with fields for 'Which company is involved?', 'What is your concern?', 'When did it happen?', 'Where did it happen?', 'Who is involved or affected?', and 'Details of your report'. There are also links to attach documents or files.

ISCC Whistleblower Tool

ISCC Whistleblower Tool

We at ISCC are committed to enhancing our certification procedures to prevent severe non-conformities and to ensure compliance with the ISCC standard. To achieve this, we take information on potential non-conformities with our requirements very seriously. We established the web-based ISCC Whistleblower Tool to allow for an easy and quick reporting procedure. All information is investigated shortly after the receipt by the authorized ISCC personnel. If you want to report on Whistleblower information to ISCC, please follow the steps outlined hereafter:

How to use the ISCC Whistleblower Tool?

Everyone can submit so-called Whistleblower reports, including the general public, ISCC system users, licensees, members, certification bodies, other stakeholders, and ISCC employees. Whistleblower Reports should be submitted via the dedicated Whistleblower Tool. The purpose of the ISCC Whistleblower Tool is to receive information, if needed anonymously, to help us detect non-conform behaviour related to the ISCC System requirements and guidelines. This includes allegations on severe non-conformities, such as fraudulent activities. The Whistleblower Tool can also be used to report on grievances with the ISCC system or ISCC employee.

Multiple Submission Options: You have the flexibility to submit reports in various ways, making it convenient for all. Our reporting tool accommodates a wide range of file formats (e.g., PDF, PNG, docx, SVG, mp4, temp, Ovi, and more), and you can also provide reports in 31 different languages. The tool is accessible without any restriction – simply click on the link below.

Anonymous Reporting: You can choose to submit reports anonymously by refraining from providing any personal identifying information. However, we encourage you to include your contact information for more effective follow-up. Rest assured, we will only share this information with our authorized ISCC personnel responsible for Whistleblower Reports and relevant departments or authorities as necessary, and always with your explicit consent (exceptions may apply in official investigations or legal proceedings).

Step-by-step process:

- Welcome Page:** Start by visiting the ISCC Whistleblower Tool's welcome page, where you will find legal information on the usage of the tool.

Which company is involved? *

ISCC - International Sustainability & Carbon Certification

What is your concern? *

When did it happen? *

Where did it happen? *

Who is involved or affected? *

Details of your report *

Click here to attach documents or files

Click here to attach documents or files

- ISCC deployed the Whistleblower Tool which allows anonymous communication in 30 languages
- So far 46 notifications have been received. Non-conformities reported include plausibility of volumes produced by certain economic operators, questionable audit quality by certain Certification Bodies, potential mislabelling of material, and generally highlighting those operators needing further scrutiny
- The Integrity Team of ISCC deals with the incoming reports, checks content and plausibility, and, if required, requests further information as basis for investigations
- For example, Whistleblower Reports regarding traceability of material produced by certain Processing Units, led to ISCC conducting IAs, leading to the withdrawal and exclusion of the concerned economic operators
- ISCC will further promote the use of the Whistleblower Tool which has become an important tool to detect potential fraudulent behaviour

UDB will be a game changer for fraud resistance. ISCC has successfully supported system users with the onboarding process

Consistent availability for collaboration with the EC UDB Team:

- ISCC to **support ongoing testing efforts** and to provide the EC team with constructive feedback
- ISCC has **organized and hosted 5 joined UDB training sessions** in 2024
- Dedicated **team of 7 professionals** has been established
- **UDB helpdesk has been set up** to support the implementation of the UDB and to ensure continuous support for the system users

Onboarding:

- **> 99.5% successfully onboarded certificates**
(7,500 out of 7,540)
- **140 certificates were suspended** during 4 suspension processes

Implemented verification and additional checks for new certification registrations in HUB, e.g.:

- Automatic cross-check with a **blacklist for individuals**
- **Orbis score** is automatically generated as an existence check
- Manual **plausibility checks**
- **Commercial register excerpt**
- Email addresses must be **person-specific**
- **Address matching with geocoordinates**, especially for processing units located in industrial areas (in process)



Thank you!

ISCC System GmbH

Hohenzollernring 72, 50672 Cologne, Germany

www.iscc-system.org

